

1) The Tahoe City Public Utility District serves water to over 4000 connections within 4 separately licensed and not interconnected water systems. They are:

- Tahoe City Main System PWS ID 3110010
- Alpine Peaks System PWS ID 3110044
- Quail Lake/McKinney Shores System PWS ID 3110011
- Rubicon System PWS ID 0910012

The data officially submitted in the Self Certification Form and Worksheet 1 represents an aggregate of all of these water systems. The Tab marked "Water Systems" in the submitted Excel backup data file represents a summary of some of the basic equivalent self-certification data for each system and their sources individually, including Annual Total Potable Water Demand, Estimated Annual Total Potable Water Supply, Supply Shortfall, List of Available Water Supplies (similar to Worksheet 1), and Water Supplies Committed to Other Sources (similar to Worksheet 1)

- 2) All data supplied is from Tahoe City Public Utility District historical records.
- 3) Groundwater elevations are recorded by either hand soundings or electronic methods and are in the units of "feet below ground surface" (Feet (bgs)).
- 4) Depth to the intake of the well pump is noted in the lower left hand corner of each vertical well graph and the arrow refers to its approximate depth below ground surface.
- 5) Historical water elevation data presented in the graph spans from January 2006 to June 2016. Older data is available on the "Data" tab.
- 6) Projected water levels are presented from July 2016 through October 2019. Water elevation projections were determined by using elevation data from July 2012 through September 2012 and through WY 13-15, and comparing current elevations to equivalent months from July 2012 through September 2012 and through WY 13-15. An offset was applied to "true" up to current elevations and was then applied to WY 17-19. The result is projected elevation for WY 17-19 based on the hydrologic conditions and production volumes of WY 13-15.
- 7) Water production projections for each source were based on an average of Calendar Year 2013 and 2014 water production for the source, similar to the demand period determined in Step 1.
- 8) Water available projections on Worksheet 1 for all sources are based on the annual average of the past ten years of production from each source. Use of this data is supported by the overall stability of the groundwater elevations in all wells for the past ten years, and the reliability of production from each well over the same period. With the exception of Crystal Way Well and Tahoe City Well 02 in 2003, the District has never withdrawn water from any of its groundwater sources to the point of affecting their ability to pump. Crystal Way Well was the only source of water supply in its service area in 2003. Since 2004 an approved treated surface water source from Lake Tahoe provides additional supply to the system and water elevations in the Crystal Way Well have since returned to levels seen at the time it was drilled and developed. Tahoe City Well 02 was drawn down to its pump intake in 2003. In response the well was deepened to 500 feet in 2003 which tapped a lower water bearing zone similar to Tahoe City Well 03. Since deepening the well, no operational deficiencies have been noted.
- 9) Annual MG Pumped represents the number of million gallons (MG) produced from that source in the previous 12 months. Its data axis resides on the right side of each graphical figure.

Worksheet 1 : Total available water supply for individual water supplier

Step 2 of Water Supply Reliability Certification and Data Submission Form

Tahoe City Public Utilities District << Enter name of urban water supplier

User Input Instructions

- (1) Please select units of measure from the dropdown menu.
- (2) Enter information on available water supplies and supplies committed to other uses.

LEGEND:

| | |
|-------------------------|--|
| User Input or Selection | |
| Linked from User Input | |

million gallons (MG) << Select units of measure

Available Water Supplies

| Sources of Supply | Name of Provider(s) or Description | Source used in prior years? | Water Available in | | | Wholesaler information | Wholesaler Water System Number** |
|---|-------------------------------------|-----------------------------|--------------------|-----------|---------|------------------------|---|
| | | | WY 2017 * | WY 2018 * | WY 2019 | Direct Web Link | |
| WHOLESALER SUPPLIED >> Provide direct web link(s) to information on the volume of water the wholesaler expects to deliver to the retailer water supplier in each year. | | | | | | | |
| Wholesaler 1 | | Select Y/N | | | | | |
| Wholesaler 2 | | Select Y/N | | | | | |
| Wholesaler 3 | | Select Y/N | | | | | |
| Wholesaler 4 | | Select Y/N | | | | | |
| Wholesaler 5 | | Select Y/N | | | | | |
| SELF-SUPPLIED | | | | | | | |
| Water Recycling (potable) | | Select Y/N | | | | | |
| Surface water: SWP | | Select Y/N | | | | | |
| Surface water: CVP | | Select Y/N | | | | | |
| Surface water: Colorado River | | Select Y/N | | | | | |
| Surface water: other (describe) | Treated Surface Water- Lake Tahoe | Yes | 32.0 | 32.0 | 32.0 | | |
| Surface water: other (describe) | | Select Y/N | | | | | |
| Local Groundwater | Highlands Well 01 (PWS ID 3110010) | Yes | 9.5 | 9.5 | 9.5 | | << Complete groundwater tab |
| | Highlands Well 02 (PWS ID 3110010) | Yes | 27.2 | 27.2 | 27.2 | | |
| | Tahoe City Well 02 (PWS ID 3110010) | Yes | 158.9 | 158.9 | 158.9 | | |
| | Tahoe City Well 03 (PWS ID 3110010) | Yes | 142.4 | 142.4 | 142.4 | | |
| | Tahoe Tavern Well (PWS ID 3110010) | Yes | 41.9 | 41.9 | 41.9 | | |
| | Rileys Spring (PWS ID 3110044) | Yes | 8.5 | 8.5 | 8.5 | | |
| | Crystal Way Well (PWS ID 3110011) | Yes | 28.1 | 28.1 | 28.1 | | |
| | Rubicon Well 01 (PWS ID 0910012) | Yes | 40.6 | 40.6 | 40.6 | | |
| | Rubicon Well 02 (PWS ID 0910012) | Yes | 8.7 | 8.7 | 8.7 | | |
| | Rubicon Well 03 (PWS ID 0910012) | Yes | 8.7 | 8.7 | 8.7 | | |
| Seawater Desalination | | Select Y/N | | | | | |
| Transfers | | Select Y/N | | | | | |
| Exchanges | | Select Y/N | | | | | |
| Other (describe): | | Select Y/N | | | | | << To add more self-supplied sources, insert as many rows |
| SUBTOTAL of available supplies (in units selected) | | | 506.5 | 506.5 | 506.5 | | |

* Any carryover from one year is incorporated in the supply of the following year, as legally allowed.

** Look up Water system number at this link: <https://sdwis.waterboards.ca.gov/PDWW/>

Water Supply Reliability Certification Form

Rows can be inserted to account for other sources of supply (e.g., desalination of brackish water, banked water)

If a source has not been used in prior years, e.g., a new treatment facility will be constructed, supporting documentation must document when the new source will be fully implemented.

Water Supplies Committed to Other Uses (Not Available)

| Other Uses | Describe | Quantity in WY 2017 | Quantity in WY 2018 | Quantity in WY 2019 |
|--|--|---------------------|---------------------|---------------------|
| Agriculture | | | | |
| Commercial, industrial or institutional | | | | |
| New residential customers | | | | |
| Transfers | | | | |
| Other: | Noth Tahoe PUD Dollar Cove System ID 3110036 | 26.9 | 26.9 | 26.9 |
| Other: | | | | |
| SUBTOTAL of supplies not available (in units selected) | | 26.9 | 26.9 | 26.9 |

| | | | |
|--|-------|-------|-------|
| TOTAL available water supply (in units selected) | 479.6 | 479.6 | 479.6 |
|--|-------|-------|-------|

(Subtotal of available supplies minus subtotal of supplies committed to other uses)

>>> Please enter values calculated below in Step 2 of the online form

| | | | |
|---|-------|-------|-------|
| TOTAL available water supply converted to acre feet | 1,472 | 1,472 | 1,472 |
|---|-------|-------|-------|

>> If error, verify you have selected units of measure

If using local groundwater sources, answer questions below

Complete only if relying on local groundwater for a portion of supply (not brackish groundwater desalination or banking)

Do you know the volume of water in the aquifer that is in your source(s) of groundwater?

Pick one:

Optional notes and comments:
No formal evaluation of the aquifers supplying water to the Tahoe City Public Utility District has ever been performed. According to California Department of Water Resources, the groundwater basins within the Tahoe City Public Utility District service areas are in the "very low" priority category and are not identified as in an overdraft

How frequently are groundwater elevations monitored?

Pick one:

Optional notes and comments:
Groundwater elevations are included for all groundwater sources in the backup data with the exception of Rubicon Well 03. Rubicon Well 03 is a sister well to Rubicon Well 02 and therefore water surface elevation and well performance are being justified based on Rubicon Well 02 data. Rileys Springs are horizontal spring wells and therefore

At what depth is/was your water table? (in feet) Do not average values for multiple basins, management zones, or wells. If there are multiple wells, enter the depth for the source where the largest portion of supply comes from; itemize information in the notes or sup

In June 2016 feet

In June 2013 feet

Optional notes and comments:
Tahoe City Public Utility District operates ten groundwater sources. Tahoe City Well 02 has historically provided the largest portion of supply, therefore its data is provided here. Similar data for all groundwater sources is itemized in the backup data submittal.

How many feet can you withdraw without substantially affecting your ability to pump water? (in feet)

If there are multiple wells, enter the depth for the source where the largest portion of supply comes from as a representative well; provide additic

feet

Optional notes and comments:

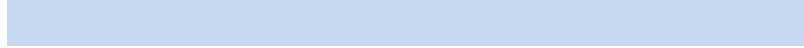
With the exception of Crystal Way Well and Tahoe City Well 02 in 2003, the District has never withdrawn water from any of its groundwater sources to the point of affecting their ability to pump. Crystal Way Well was the only source of water supply in its service area in 2003. Since 2004 an approved treated surface water source from Lake

Do you have groundwater that you expect to sell or distribute to another water supplier that is not accounted for in your calculations?

Pick one:

Describe:

>>> Thank you.



porting documentation.

onal information in the notes or supporting documentation.

Explanation of Data

- 1) The Tahoe City Public Utility District serves water to over 4000 connections within 4 separately licensed and not interconnected water systems. They are:
 - Tahoe City Main System PWS ID 3110010
 - Alpine Peaks System PWS ID 3110044
 - Quail Lake/McKinney Shores System PWS ID 3110011
 - Rubicon System PWS ID 0910012The data officially submitted in the Self Certification Form and Worksheet 1 represents an aggregate of all of these water systems. The Tab marked "Water Systems" in the submitted Excel backup data file represents a summary of some of the basic equivalent self-certification data for each system and their sources individually, including Annual Total Potable Water Demand, Estimated Annual Total Potable Water Supply, Supply Shortfall, List of Available Water Supplies (similar to Worksheet 1), and Water Supplies Committed to Other Sources (similar to Worksheet 1)
- 2) All data supplied is from Tahoe City Public Utility District historical records.
- 3) Groundwater elevations are recorded by either hand soundings or electronic methods and are in the units of "feet below ground surface" (Feet (bgs)).
- 4) Depth to the intake of the well pump is noted in the lower left hand corner of each vertical well graph and the arrow refers to its approximate depth below ground surface.
- 5) Historical water elevation data presented in the graph spans from January 2006 to June 2016. Older data is available on the "Data" tab.
- 6) Projected water levels are presented from July 2016 through October 2019. Water elevation projections were determined by using elevation data from July 2012 through September 2012 and through WY 13-15, and comparing current elevations to equivalent months from July 2012 through September 2012 and through WY 13-15. An offset was applied to "true" up to current elevations and was then applied to WY 17-19. The result is projected elevation for WY 17-19 based on the hydrologic conditions and production volumes of WY 13-15.
- 7) Water production projections for each source were based on an average of Calendar Year 2013 and 2014 water production for the source, similar to the demand period determined in Step 1.
- 8) Water available projections on Worksheet 1 for all sources are based on the annual average of the past ten years of production from each source. Use of this data is supported by the overall stability of the groundwater elevations in all wells for the past ten years, and the reliability of production from each well over the same period. With the exception of Crystal Way Well and Tahoe City Well 02 in 2003, the District has never withdrawn water from any of its groundwater sources to the point of affecting their ability to pump. Crystal Way Well was the only source of water supply in its service area in 2003. Since 2004 an approved treated surface water source from Lake Tahoe provides additional supply to the system and water elevations in the Crystal Way Well have since returned to levels seen at the time it was drilled and developed. Tahoe City Well 02 was drawn down to its pump intake in 2003. In response the well was deepened to 500 feet in 2003 which tapped a lower water bearing zone similar to Tahoe City Well 03. Since deepening the well, no operational deficiencies have been noted.
- 9) Annual MG Pumped represents the number of million gallons (MG) produced from that source in the previous 12 months. Its data axis resides on the right side of each graphical figure.

million gallons (MG)

Tahoe City Public Utility District: Tahoe City Main Water System PWS ID 3110010

| Sources of Supply | Name of Provider(s) or Description | Source used in prior years? | Water Available in | | | Water Produced | |
|----------------------|------------------------------------|-----------------------------|--------------------|--------------|--------------|----------------|--------------|
| | | | WY 2017 * | WY 2018 * | WY 2019 | CY 2013 | CY 2014 |
| SELF-SUPPLIED | | | | | | | |
| Local Groundwater | Highlands Well 01 | Yes | 9.5 | 9.5 | 9.5 | 8.5 | 8.4 |
| | Highlands Well 02 | Yes | 27.2 | 27.2 | 27.2 | 24.2 | 23.9 |
| | Tahoe City Well 02 | Yes | 158.9 | ### | 158.9 | 171.7 | 139.9 |
| | Tahoe City Well 03 | Yes | 142.4 | ### | 142.4 | 131.3 | 123.4 |
| | Tahoe Tavern Well | Yes | 41.9 | 41.9 | 41.9 | 39.5 | 33.1 |
| | SUBTOTAL | | 379.9 | 379.9 | 379.9 | 374.2 | 328.7 |

Water Supplies Committed to Other Uses (Not Available)

| Other Uses | Describe | Quantity in WY 2017 | Quantity in WY 2018 | Quantity in WY 2019 | Supplied 2013 | Supplied 2014 |
|------------|---|---------------------|---------------------|---------------------|---------------|---------------|
| Other: | NTPUD Dollar Cove System | 26.9 | 26.9 | 26.9 | 27.7 | 25.6 |
| | SUBTOTAL of supplies not available | 26.9 | 26.9 | 26.9 | 27.7 | 25.6 |

TOTAL available water supply (in units selected) 353.0 353.0 353.0

TOTAL available water supply converted to acre feet 1,083 1,083 1,083

Annual Potable Water Demand (ac-ft) 997 997 997
 (equals average of water produced minus average of water committed to other uses in CY 13 and CY 14)

Supply Shortfall (ac-ft) (87) (87) (87)

All Water Systems Total Available Water Supply (ac-ft) 1,472
 All Water Systems Annual Potable Water Demand (ac-ft) 1,286
 All Water Systems Supply Shortfall (ac-ft) (185)

million gallons (MG)

Tahoe City Public Utility District: Alpine Peaks System PWS ID 3110044

| Sources of Supply | Name of Provider(s) or Description | Source used in prior years? | Water Available in | | | Water Produced | |
|----------------------|------------------------------------|-----------------------------|--------------------|------------|------------|----------------|------------|
| | | | WY 2017 * | WY 2018 * | WY 2019 | CY 2013 | CY 2014 |
| SELF-SUPPLIED | | | | | | | |
| Local Groundwater | Riley's Spring | Yes | 8.5 | 8.5 | 8.5 | 6.1 | 5.3 |
| | | | | | | | |
| | | | | | | | |
| | | | | | | | |
| | SUBTOTAL | | 8.5 | 8.5 | 8.5 | 6.1 | 5.3 |

Water Supplies Committed to Other Uses (Not Available)

| Other Uses | Describe | Quantity in WY 2017 | Quantity in WY 2018 | Quantity in WY 2019 |
|------------|---|---------------------|---------------------|---------------------|
| Other: | | - | - | - |
| | SUBTOTAL of supplies not available | - | - | - |

TOTAL available water supply (in units selected) 8.5 8.5 8.5

TOTAL available water supply converted to acre feet 26 26 26

Annual Potable Water Demand (ac-ft) 17 17 17
 (equals average of water produced in CY 13 and CY 14)

Supply Shortfall (ac-ft) (9) (9) (9)

million gallons (MG)

Tahoe City Public Utility District: Quail Lake/McKinney Shores System PWS ID 3110011

| Sources of Supply | Name of Provider(s) or Description | Source used in prior years? | Water Available in | | | Water Produced | |
|----------------------|------------------------------------|-----------------------------|--------------------|-------------|-------------|----------------|-------------|
| | | | WY 2017 * | WY 2018 * | WY 2019 | CY 2013 | CY 2014 |
| SELF-SUPPLIED | | | | | | | |
| Local Groundwater | Crystal Way Well | Yes | 28.1 | 28.1 | 28.1 | 26.4 | 24.0 |
| Surface water: | Treated Surface Water- Lake Tahoe | Yes | 32.0 | 32.0 | 32.0 | 20.8 | 19.2 |
| Other (describe): | | | | | | | |
| | | | | | | | |
| | SUBTOTAL | | 60.1 | 60.1 | 60.1 | 47.2 | 43.2 |

Water Supplies Committed to Other Uses (Not Available)

| Other Uses | Describe | Quantity in WY 2017 | Quantity in WY 2018 | Quantity in WY 2019 |
|------------|---|---------------------|---------------------|---------------------|
| Other: | | - | - | - |
| | SUBTOTAL of supplies not available | - | - | - |

TOTAL available water supply (in units selected) 60.1 60.1 60.1

TOTAL available water supply converted to acre feet 184 184 184

Annual Potable Water Demand (ac-ft) 139 139 139
 (equals average of water produced in CY 13 and CY 14)

Supply Shortfall (ac-ft) (46) (46) (46)

million gallons (MG)

Tahoe City Public Utility District: Rubicon System PWS ID 0910012

| Sources of Supply | Name of Provider(s) or Description | Source used in prior years? | Water Available in | | | Water Produced | |
|----------------------|------------------------------------|-----------------------------|--------------------|-------------|-------------|----------------|-------------|
| | | | WY 2017 * | WY 2018 * | WY 2019 | CY 2013 | CY 2014 |
| SELF-SUPPLIED | | | | | | | |
| Local Groundwater | Rubicon Well 01 | Yes | 40.6 | 40.6 | 40.6 | 38.7 | 36.4 |
| | Rubicon Well 02 | Yes | 8.7 | 8.7 | 8.7 | 2.8 | 4.9 |
| | Rubicon Well 03 | Yes | 8.7 | 8.7 | 8.7 | 3.7 | 0.5 |
| | SUBTOTAL | | 58.0 | 58.0 | 58.0 | 45.1 | 41.8 |

Water Supplies Committed to Other Uses (Not Available)

| Other Uses | Describe | Quantity in WY 2017 | Quantity in WY 2018 | Quantity in WY 2019 |
|------------|---|---------------------|---------------------|---------------------|
| Other: | | - | - | - |
| | SUBTOTAL of supplies not available | - | - | - |

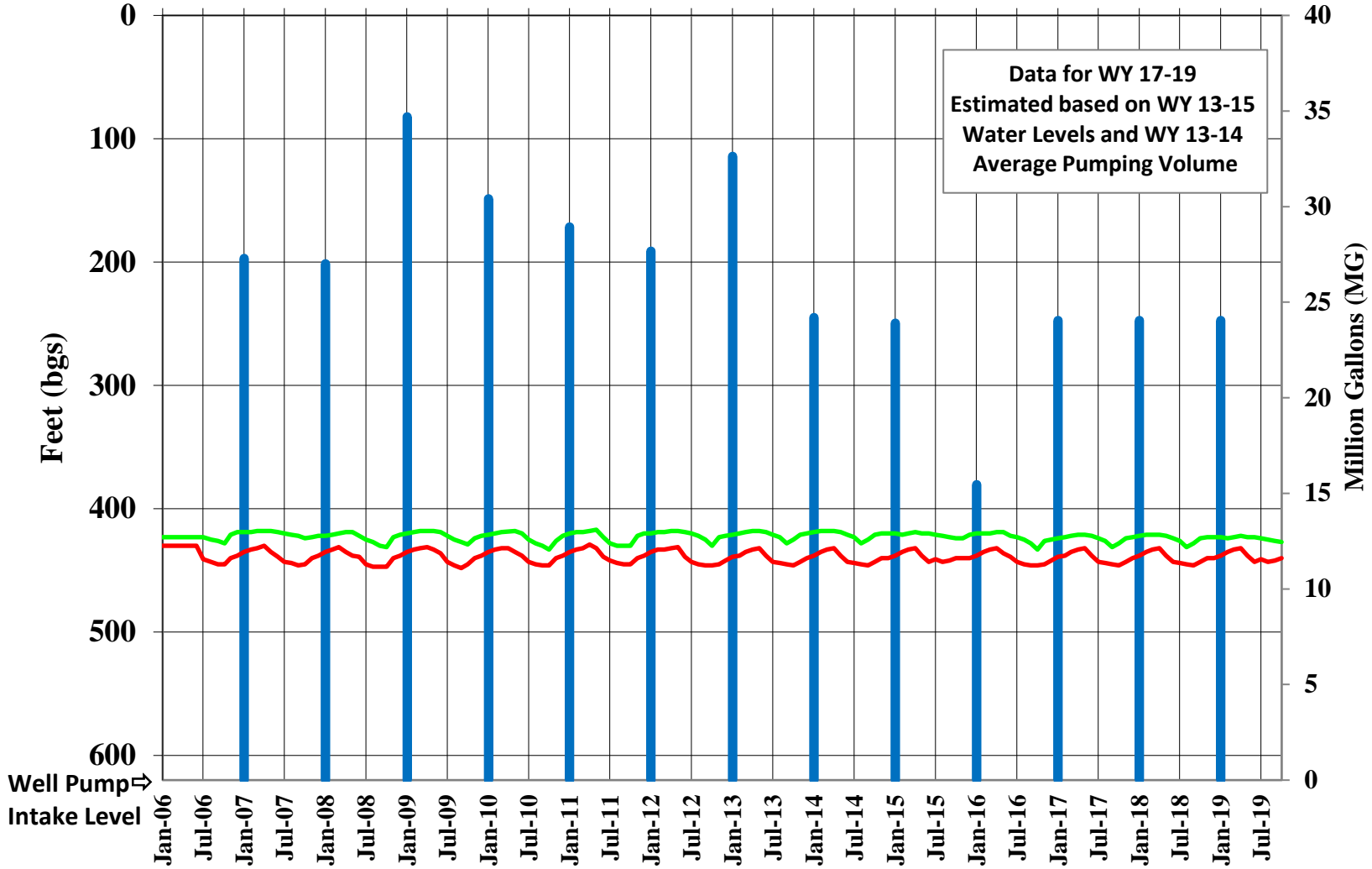
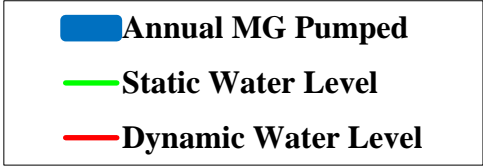
TOTAL available water supply (in units selected) 58.0 58.0 58.0

TOTAL available water supply converted to acre feet 178 178 178

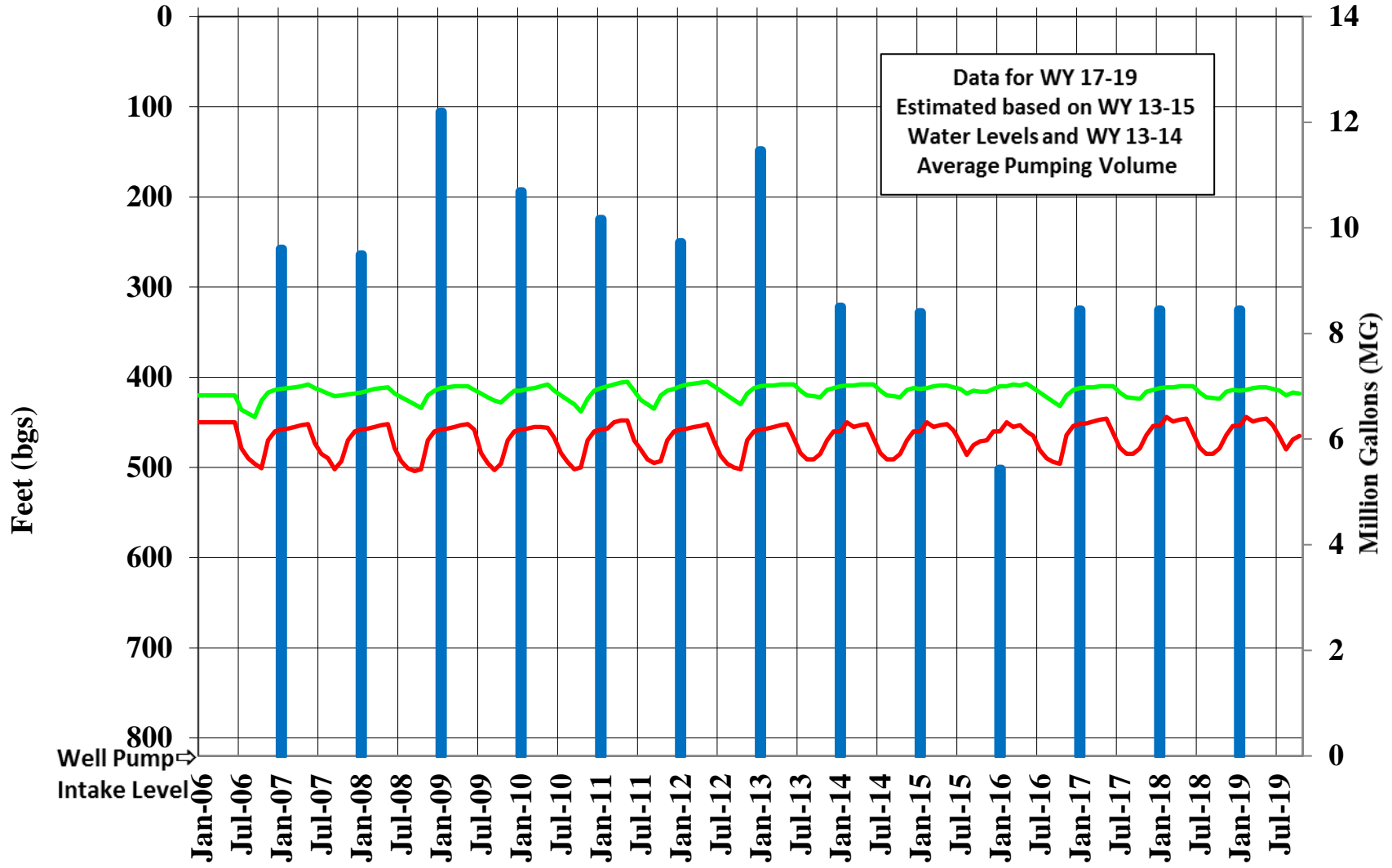
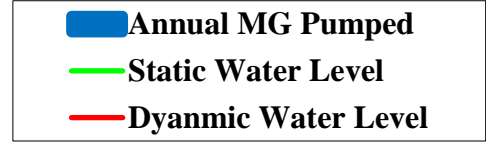
Annual Potable Water Demand (ac-ft) 133 133 133
 (equals average of water produced in CY 13 and CY 14)

Supply Shortfall (ac-ft) (45) (45) (45)

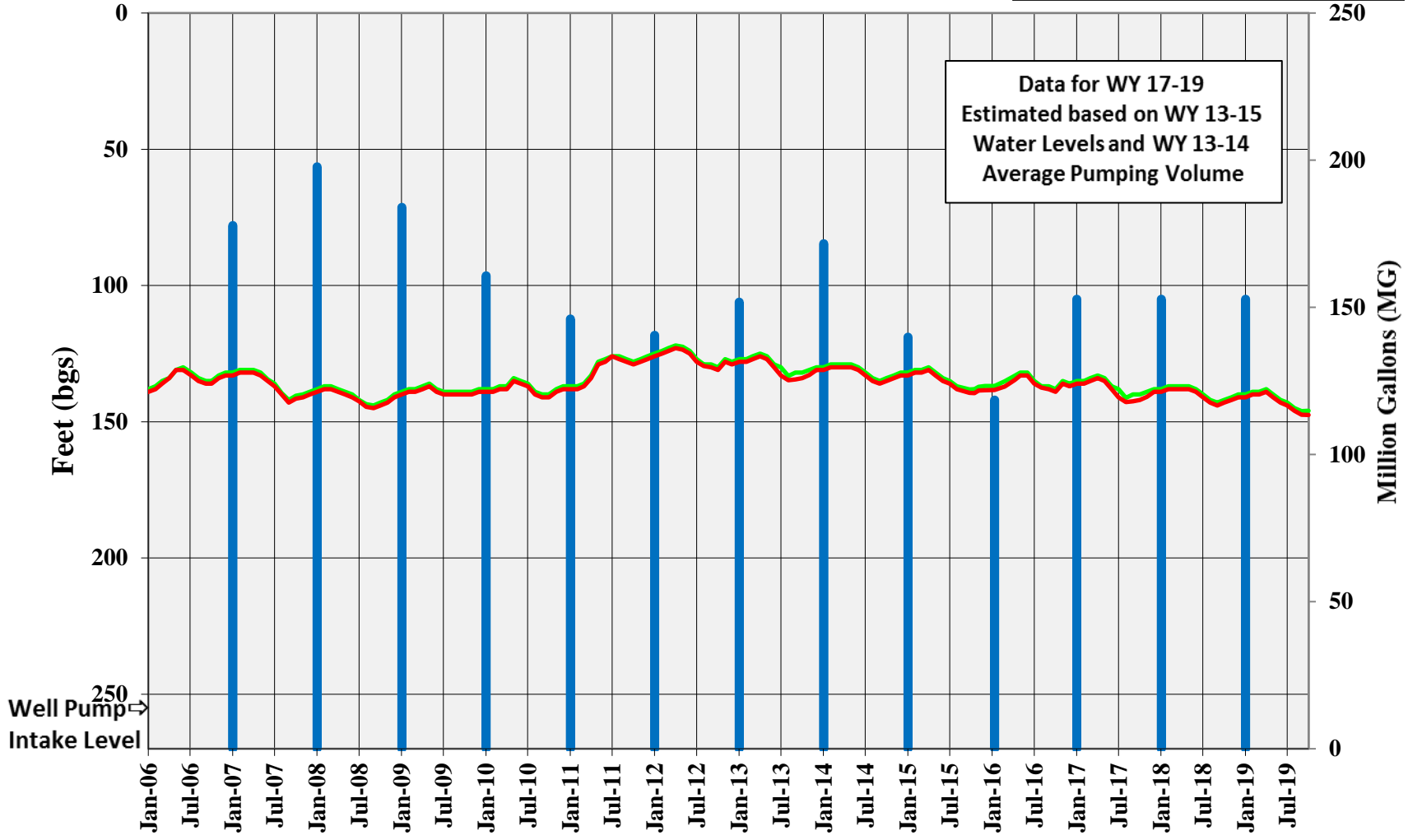
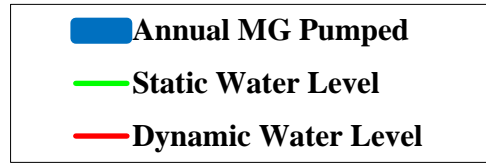
Tahoe City Public Utility District Highlands Well #2



Tahoe City Public Utility District Highlands Well #1

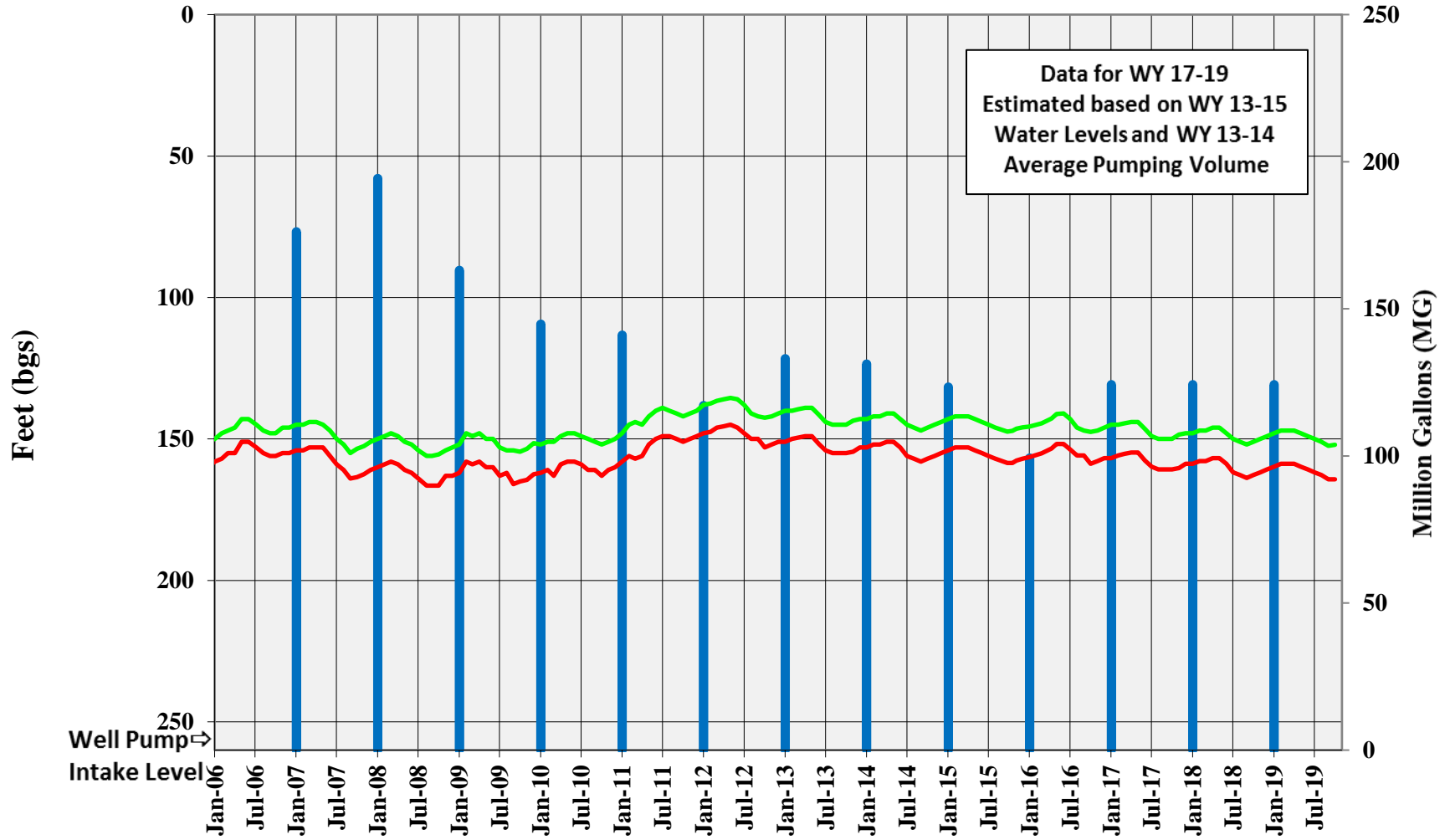
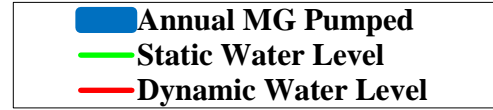


Tahoe City Public Utility District Tahoe City Well 02



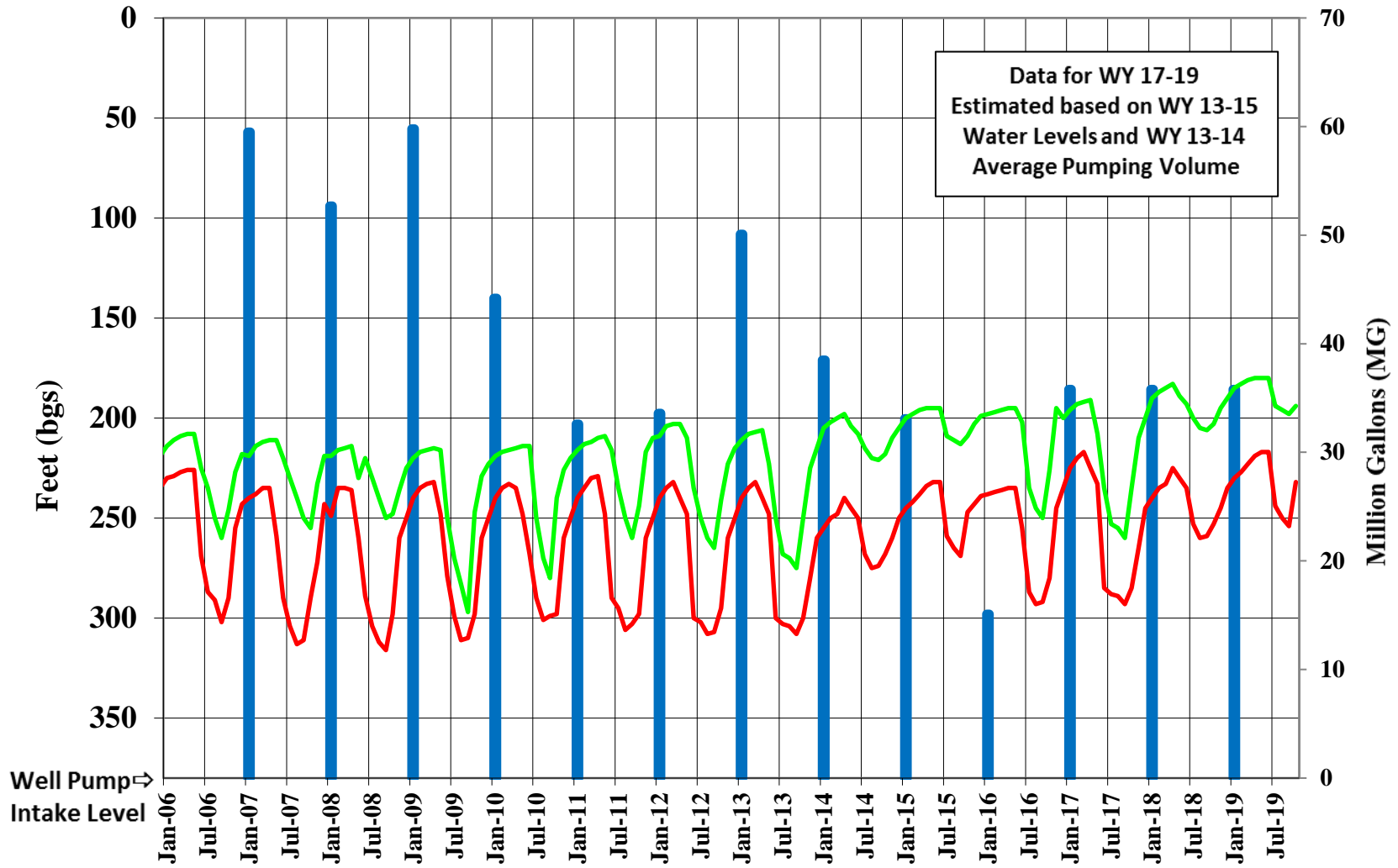
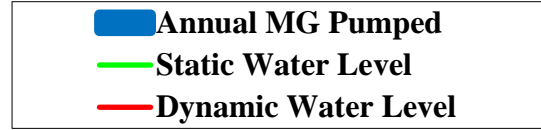
Well Pump Intake Level → 250

Tahoe City Public Utility District Tahoe City Well 03

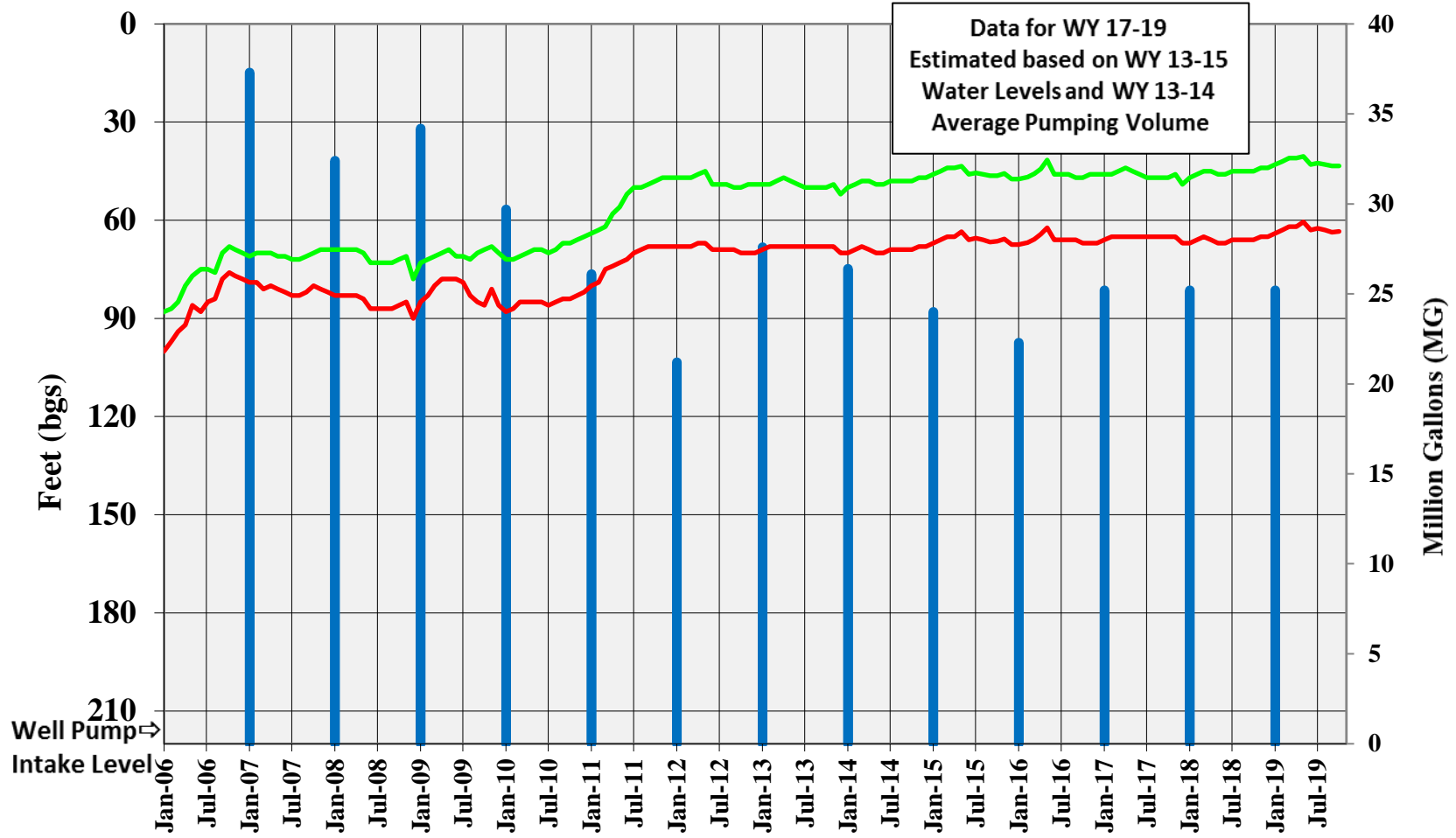
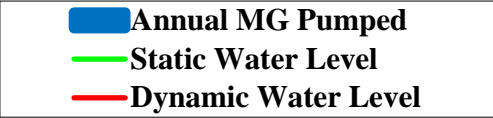


Well Pump
Intake Level →

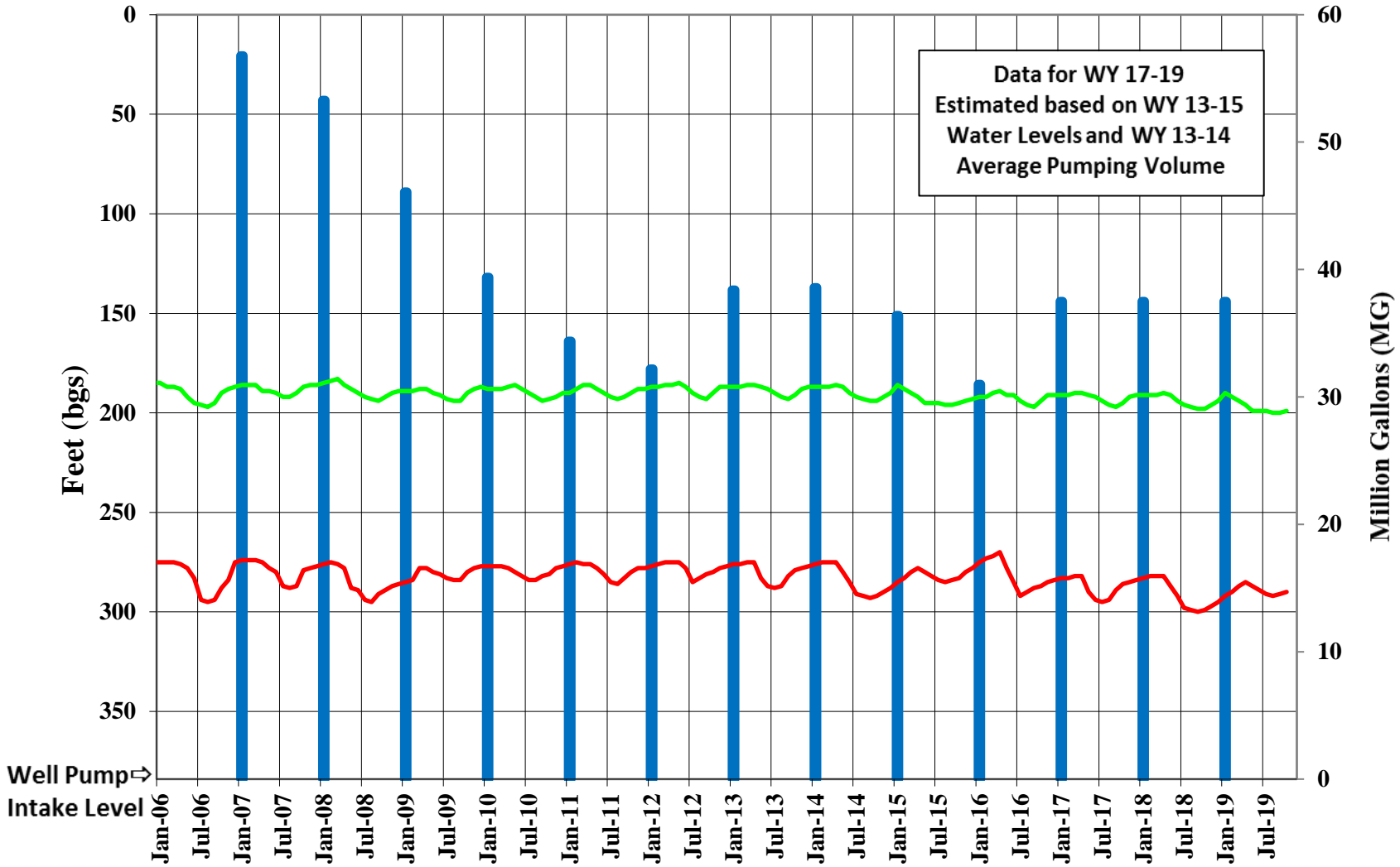
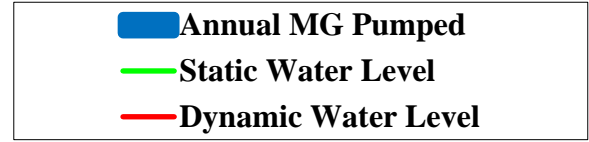
Tahoe City Public Utility District Tahoe Tavern Well



Tahoe City Public Utility District Crystal Way Well

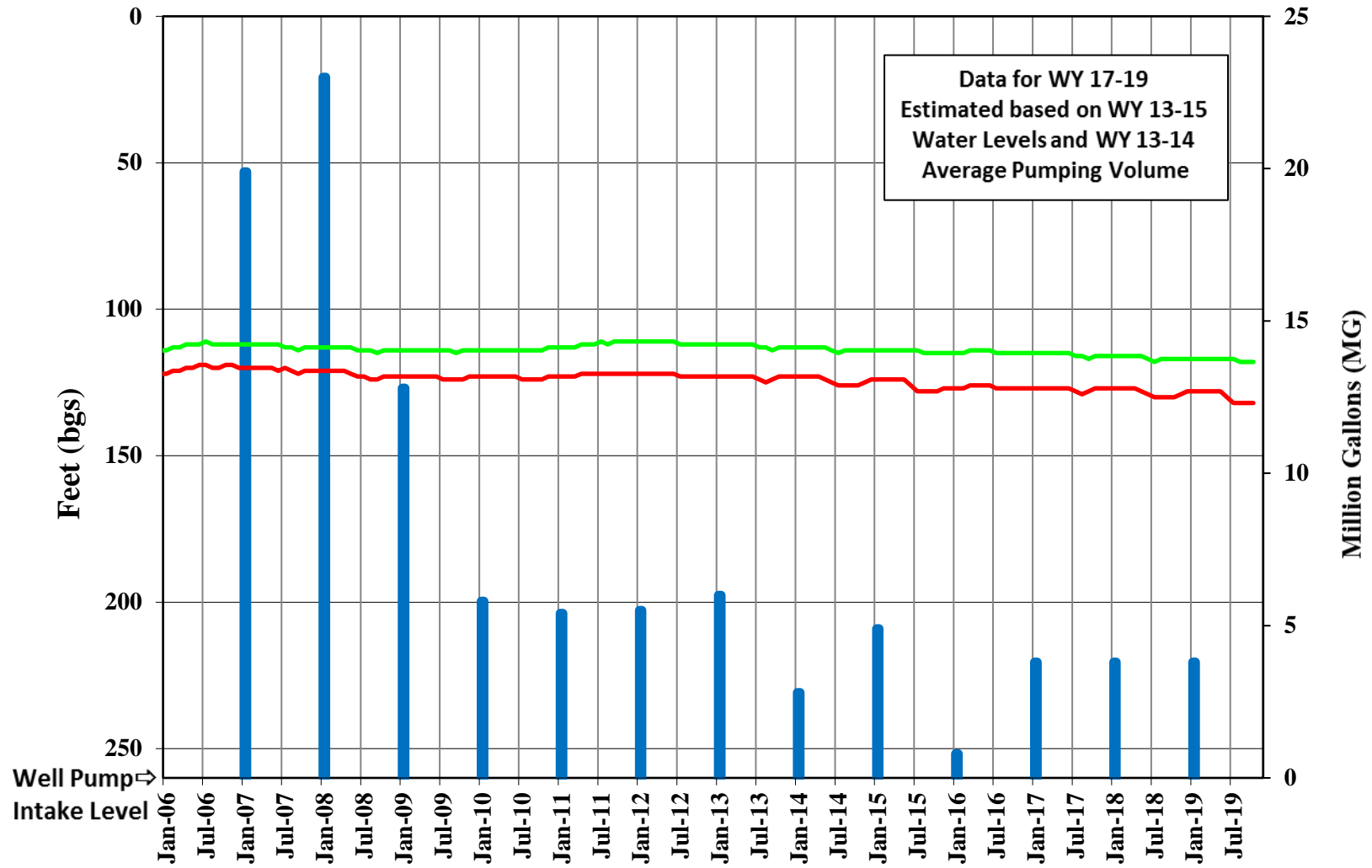
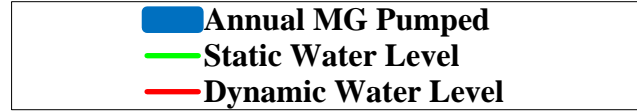


Tahoe City Public Utility District Rubicon Well 01

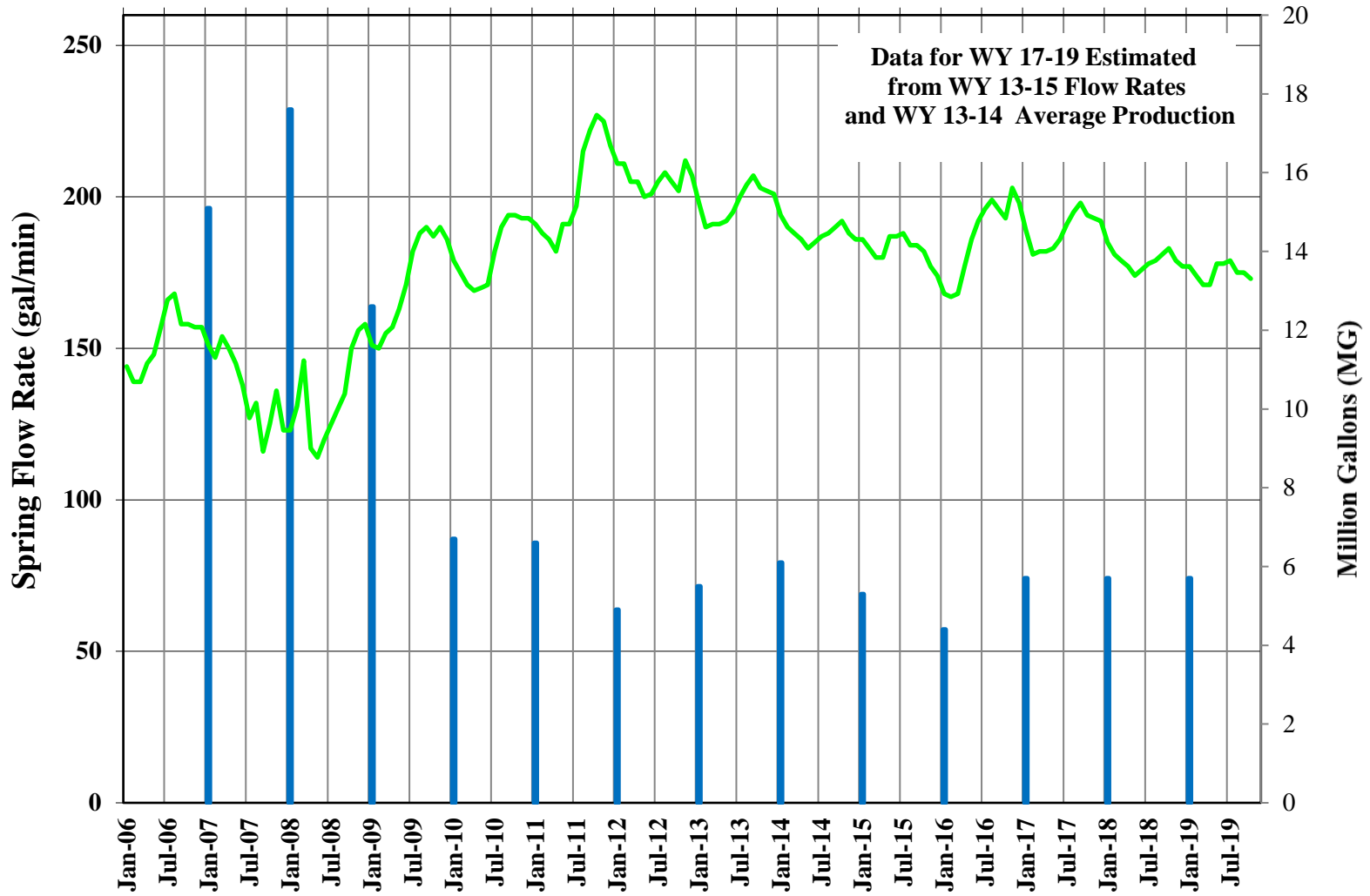


Well Pump ↗
Intake Level ↘

Tahoe City Public Utility District Rubicon Well 02



Tahoe City Public Utility District Rileys Springs



Certification of Self-Certified Conservation Standard

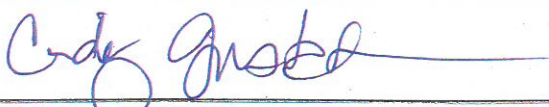
Certification of Self-Certified Conservation Standard Form

I hereby certify that: Tahoe City Public Utility District

1. I will oversee, review, and take full responsibility for the completeness and accuracy of all data submitted to the State Water Resources Control Board as part of the reporting required pursuant to California Code of Regulations, title 23, section 864.5, subdivisions (a)(3) and (h);
2. I have the authority to make the aforesaid certifications on behalf of

Tahoe City Public Utility District

I acknowledge that submitting any information required by California Code of Regulations, title 23, section 864.5, including this certification, that I know or should know to be materially false is a violation punishable by civil liability of up to five hundred dollars (\$500) for each day in which the violation occurs. Every day that the error goes uncorrected constitutes a separate violation. Civil liability for the violation is in addition to, and does not supersede or limit, any other remedies, civil or criminal.

| | |
|--|--|
| Printed Name | Cindy Gustafson |
| Title (General Manager or equivalent) | General Manager |
| Signature |  |
| Date | June 16, 2016 |
| Email Address | cindyg@tcpud.org |
| Phone Number | (530) 580-6326 |

Please print, sign and submit completed form and upload the form to this weblink (see Step 5 of the online form): <http://drinc.ca.gov/dnn/applications/publicwatersystems/waterreliabilitycertification.aspx>